

# WHERE CAN I FIND CHRISTMAS?

From the animated TV Special "The Bear Who Slept Through Christmas"

Music and Lyrics by  
Doug Goodwin ASCAP

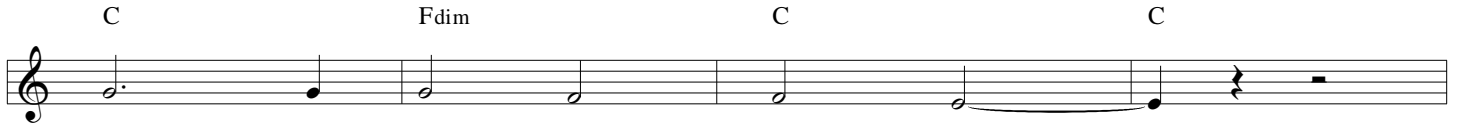
♩ = 118

4 0 2

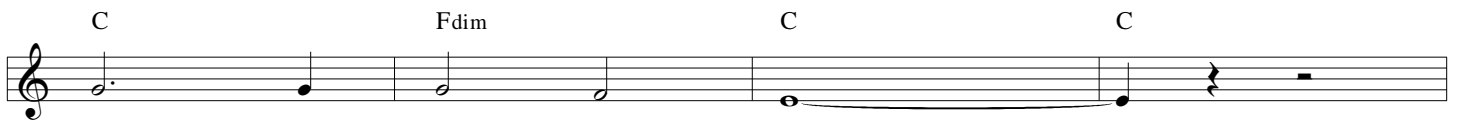


*With feeling*

*Continue Rolling Chords in Bass*



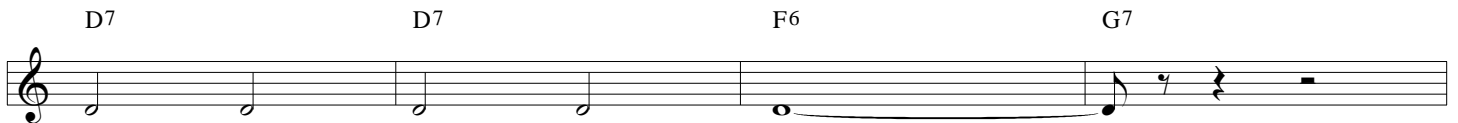
WHERE CAN I FIND CHRIST - MAS?



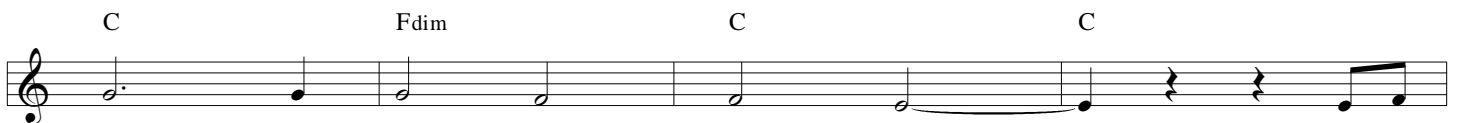
Where can Christ - mas be?



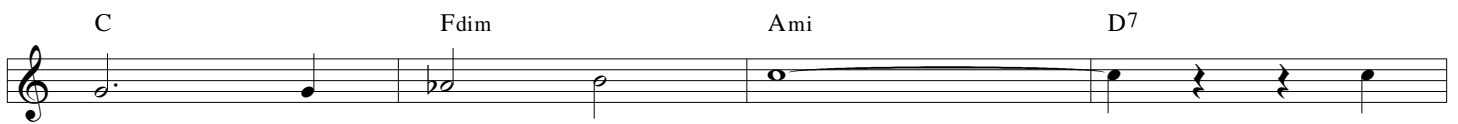
Where and what is Christ - mas? Is it



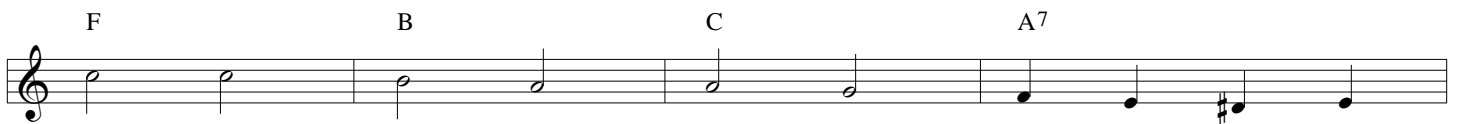
some - thing I can see?



WHERE CAN I FIND CHRIST - MAS? And the



dreams I'm dream - ing of I



know that there's a Christ - mas some - where that is

-2-  
Where Can I Find Christmas?

4 0 2

Dmi7 G7 C F C

filled with joy and love For

*Light 3/4 Time / A Bit Faster / No Rolling Chords in Bass*

E7 E7 E7 E7

Christ - mas is that cer - tain glow That

Ami A<sup>b</sup>5 C/G C<sup>b</sup>/G<sup>b</sup>

just can't be de - fined It's a

Emi E<sup>b</sup>5 G/D G<sup>b</sup>/D<sup>b</sup>

hap - py feel - - ing deep in - side You

C C<sup>#</sup>dim Dmi7 *Rit.* G7

get when you are kind And

*A tempo / As Before*

C Fdim C C

now that I've found Christ - mas And the

C Fdim Ami D7

joys I'm dream - ing of I'll

F B C A7 Dmi7

tell the world that find - ing Christ - mas is a sim - ple

G7 C Fmi<sup>6</sup> C

thing called love

MERRY CHRISTMAS .... to .... EVERYONE .....